

Offers In Excess Of £500,000

Northern Parade, Portsmouth PO2
9LN

bernards
THE ESTATE AGENTS



HIGHLIGHTS

- ◆ END TERRACED HOUSE
- ◆ FOUR DOUBLE BEDROOMS
- ◆ EN-SUITE TO MASTER
- ◆ EN-SUITE TO BEDROOM TWO
- ◆ MODERN FAMILY BATHROOM
- ◆ TWO RECEPTION ROOMS
- ◆ FANTASTIC KITCHEN/DINER
- ◆ BEAUTIFULLY MODERNISED THROUGHOUT
- ◆ LARGE UTILITY ROOM
- ◆ STUDIO/GARAGE & PARKING

Situated along the ever-popular Northern Parade, this beautifully modernised four-bedroom end-of-terrace home offers an impressive blend of character, space and contemporary living, extending to over 2,200 sq ft including a substantial studio/garage.

Upon entering, you are welcomed by a spacious entrance hall leading to two generous reception rooms, providing versatile living and entertaining space. To the rear, the heart of the home is undoubtedly the stunning open-plan kitchen/dining room, thoughtfully designed with modern fittings, ample storage and plenty of room for family gatherings and social occasions. A large utility room and convenient ground-floor cloakroom further enhance the practicality of the accommodation.

The first floor offers four well-proportioned double bedrooms. The impressive principal bedroom benefits from a stylish en-suite shower room, while bedroom two also enjoys the luxury of its own en-suite. A contemporary family bathroom serves the remaining bedrooms, making

this an ideal home for growing families.

Externally, the property benefits from off-road parking and a substantial studio/garage with WC facilities, offering excellent flexibility as a home office, gym, hobby room, treatment room or additional entertaining space.

Conveniently located close to local amenities, schools, transport links and the Mountbatten Leisure Centre, this exceptional home combines generous accommodation with modern family living in one of Portsmouth's most sought-after residential locations.

Early viewing is highly recommended to appreciate the size, quality and versatility of accommodation on offer.

Call today to arrange a viewing

02392 728090

www.bernardsea.co.uk





Call today to arrange a viewing
02392 728090
www.bernardsestates.co.uk



PROPERTY INFORMATION

ENTRANCE HALL

LIVING ROOM

15'10" x 12'9" (4.83 x 3.89)

FAMILY ROOM

18'6" x 11'0" (5.65 x 3.36)

KITCHEN/DINING ROOM

24'0" x 16'9" (7.34 x 5.13)

UTILITY ROOM

11'0" x 9'4" (3.37 x 2.87)

DOWNSTAIRS WC

GARDEN

OUTBUILDING/STUDIO

23'5" x 13'5" (7.16 x 4.09)

FIRST FLOOR

BEDROOM ONE

15'5" x 14'7" (4.71 x 4.46)

EN-SUITE TO MASTER

8'8" x 3'11" (2.65 x 1.20)

BEDROOM TWO

15'4" x 12'10" (4.69 x 3.92)

EN-SUITE

6'9" x 3'1" (2.07 x 0.95)

BEDROOM THREE

15'2" x 11'0" (4.64 x 3.36)

BEDROOM FOUR

11'4" x 9'2" (3.47 x 2.81)

FAMILY BATHROOM

7'1" x 7'0" (2.17 x 2.15)

Portsmouth Council Tax

The local authority is Portsmouth City Council.

BAND : D

Mortgage Advisor

We offer financial services here at Bernards. If you would like to review your current Agreement In Principle or are yet to source a lender, we have a number of experienced Financial Advisors who will be happy to help.

Conveyancing

Choosing the right conveyancing solicitor is extremely important to ensure that you obtain an effective yet cost-efficient solution. The lure of supposedly cheaper on-line "conveyancing warehouse" style services can be very difficult to ignore but this is a route fraught with problems that we strongly urge you to avoid. A local, established and experienced conveyance will safeguard your interests and get the job done in a timely manner. Bernards can recommend several local firms of solicitors who have the necessary local knowledge and will provide a personable service. Please ask a member of our sales team for further details.

Offer Check Procedure

If you are considering making an offer for this or any other property Bernards Estate Agents are marketing, please make contact with your local office so we can verify/check your financial/Mortgage situation.

Anti-Money Laundering

Bernards Estate agents have a legal obligation to complete anti-money laundering checks. The AML check should be completed in branch. Please call the office to book an AML check if you would like to make an offer on this property. Please note the AML check includes taking a copy of the two forms of identification for each purchaser. A proof of address and proof of name document is required. Please note we cannot put forward an offer without the AML check being completed



Energy Efficiency Rating		Current	Potential
Very energy efficient - lower running costs			
(92 plus)	A		
(81-91)	B		
(69-80)	C		
(55-68)	D		71
(39-54)	E	55	
(21-38)	F		
(1-20)	G		
Not energy efficient - higher running costs			
England & Wales		EU Directive 2002/91/EC	



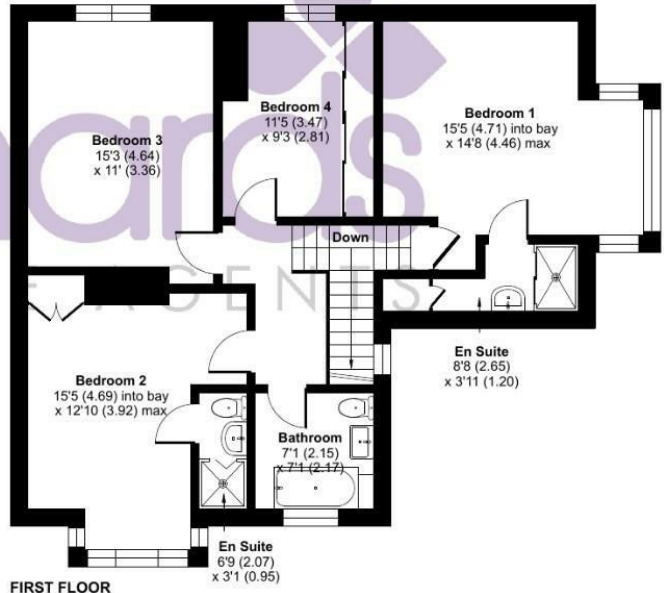
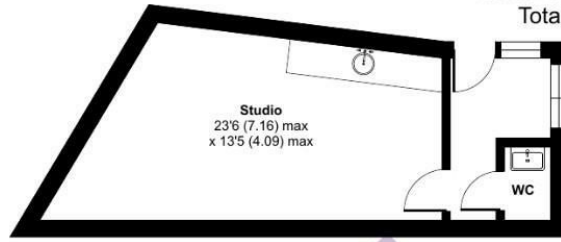
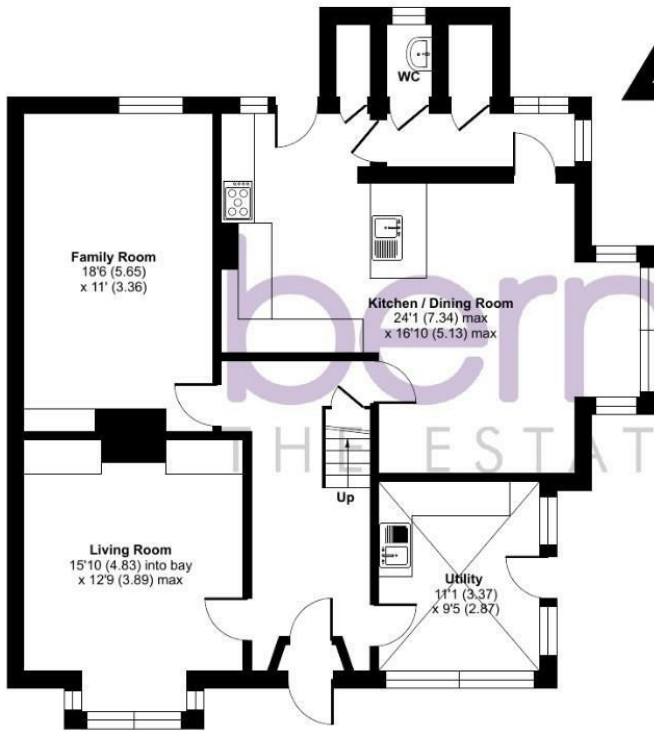
Northern Parade, Portsmouth, PO2

Approximate Area = 1939 sq ft / 180.1 sq m

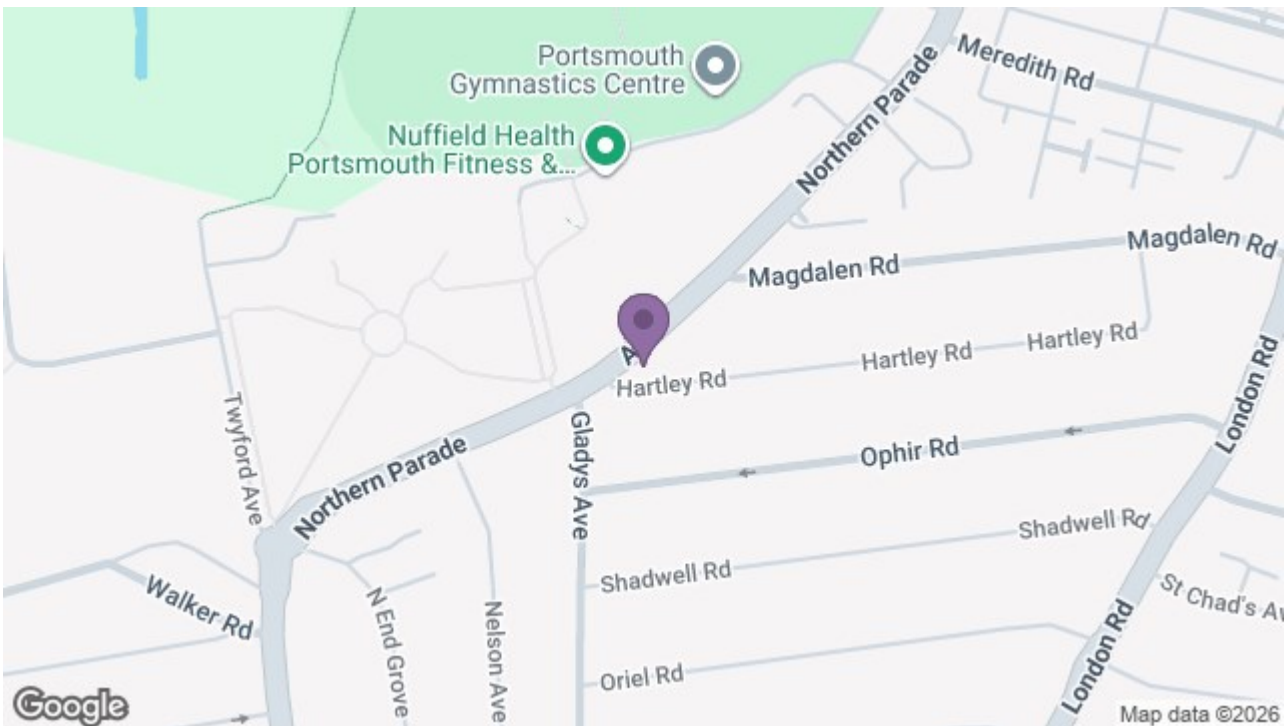
Outbuilding = 274 sq ft / 25.4 sq m

Total = 2213 sq ft / 205.5 sq m

For identification only - Not to scale



Floor plan produced in accordance with RICS Property Measurement 2nd Edition, Incorporating International Property Measurement Standards (IPMS2 Residential). © nctechcom 2026. Produced for Bernards Estate and Letting Agents Ltd. REF: 1471410



129 London Road, Portsmouth, Hampshire, PO2 9AA

t: 02392 728090

